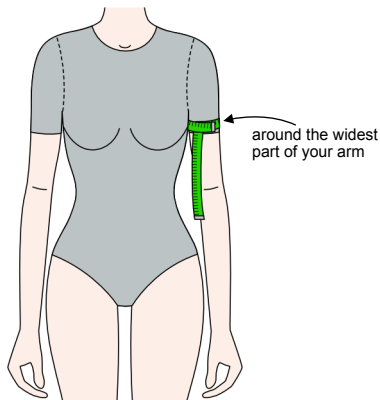


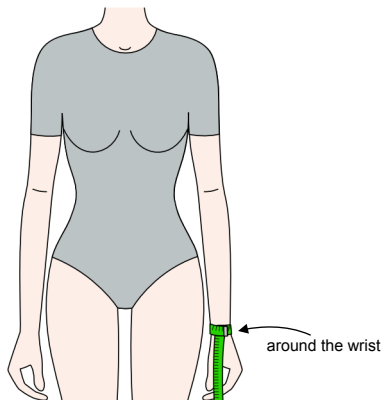
Basic sleeve block - Your measurements cheat sheet

Use this sheet to record your body measurements, along with the measurements of the bodice block you're drafting the sleeve for. This will help you create a fitted set-in sleeve that fits both your arm and your bodice accurately.

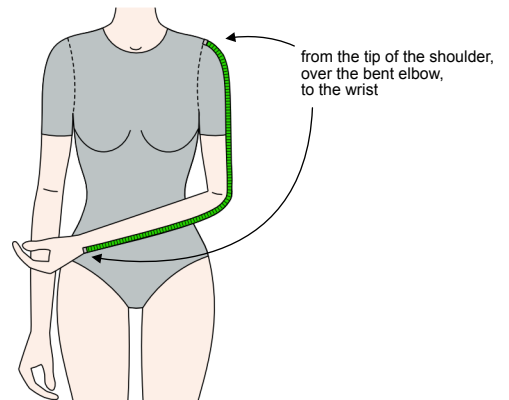
Upper arm circumference: _____



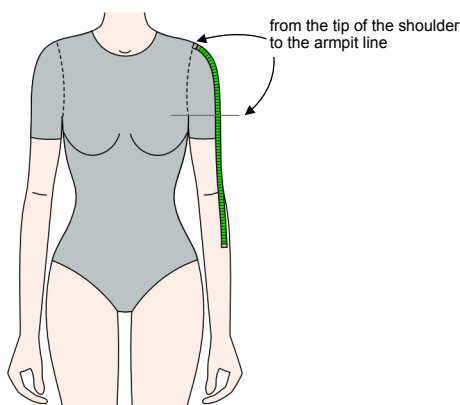
Wrist circumference: _____



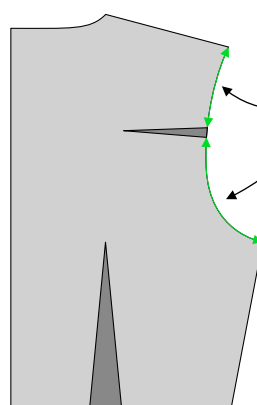
Arm length: _____



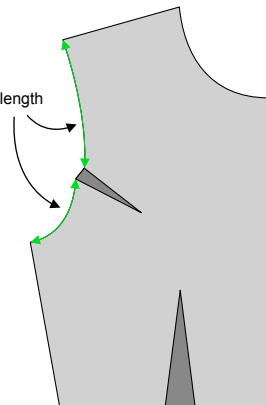
Cap height: _____



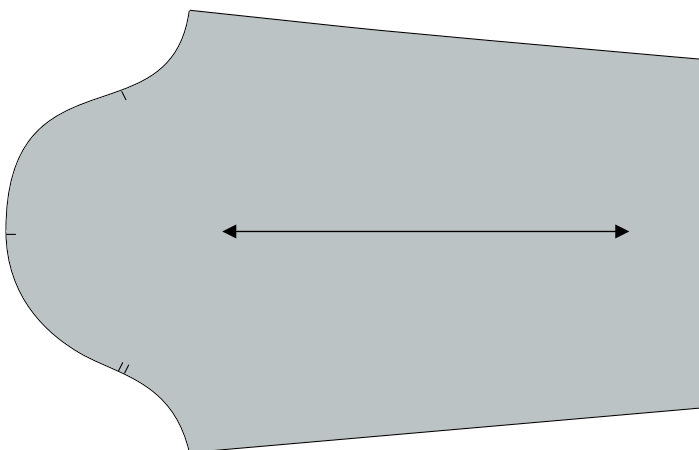
Armhole length at the BACK pattern piece: _____



Armhole length at the FRONT pattern piece: _____



The illustration below should give you a general idea of what the finished fitted sleeve looks like after you have drafted it.



Got your measurements?

Scan the QR code

or visit <https://anicka.design/how-to-draft-a-basic-sleeve-pattern/>
draft your perfect custom-fit sleeve block with the interactive tutorial.

